



GENESISTM

CEILING SOLUTIONS



©2015

Acoustic Ceiling Products, L.L.C.

PO Box 1581 Appleton, WI 54912-1581

800.434.3750 Fax 800.434.3751

acpideas.com

Presentation in this brochure or any other ACP publication is correct to the best of our knowledge at the time of publication. We provide this information in an advisory capacity only. Any advisory recommendations given in our publication must be modified to conform with local codes, conditions and specifications.

Always consult current manufacturer data sheet.

Acoustic Ceiling Products, L.L.C. is a member of C.I.S.C.A., C.S.I., and N.H.B.A.

Genesis™, CeilingMax®, GridMax®, HG-Grid® are trademarks of ACP.

ACP #B02-98 (11.15 REV-6.2)

CONTENTS

Genesis pages 04-13

Genesis Accessories pages 14-15

HG-Grid pages 16-19

GridMAX pages 20-23

CeilingMAX pages 24-29

Grid Colors page 30

Genesis™

Your Last Ceiling Panel

Waterproof and washable

Sag proof due to moisture

Class “A” fire-rated

Mold- and mildew-resistant

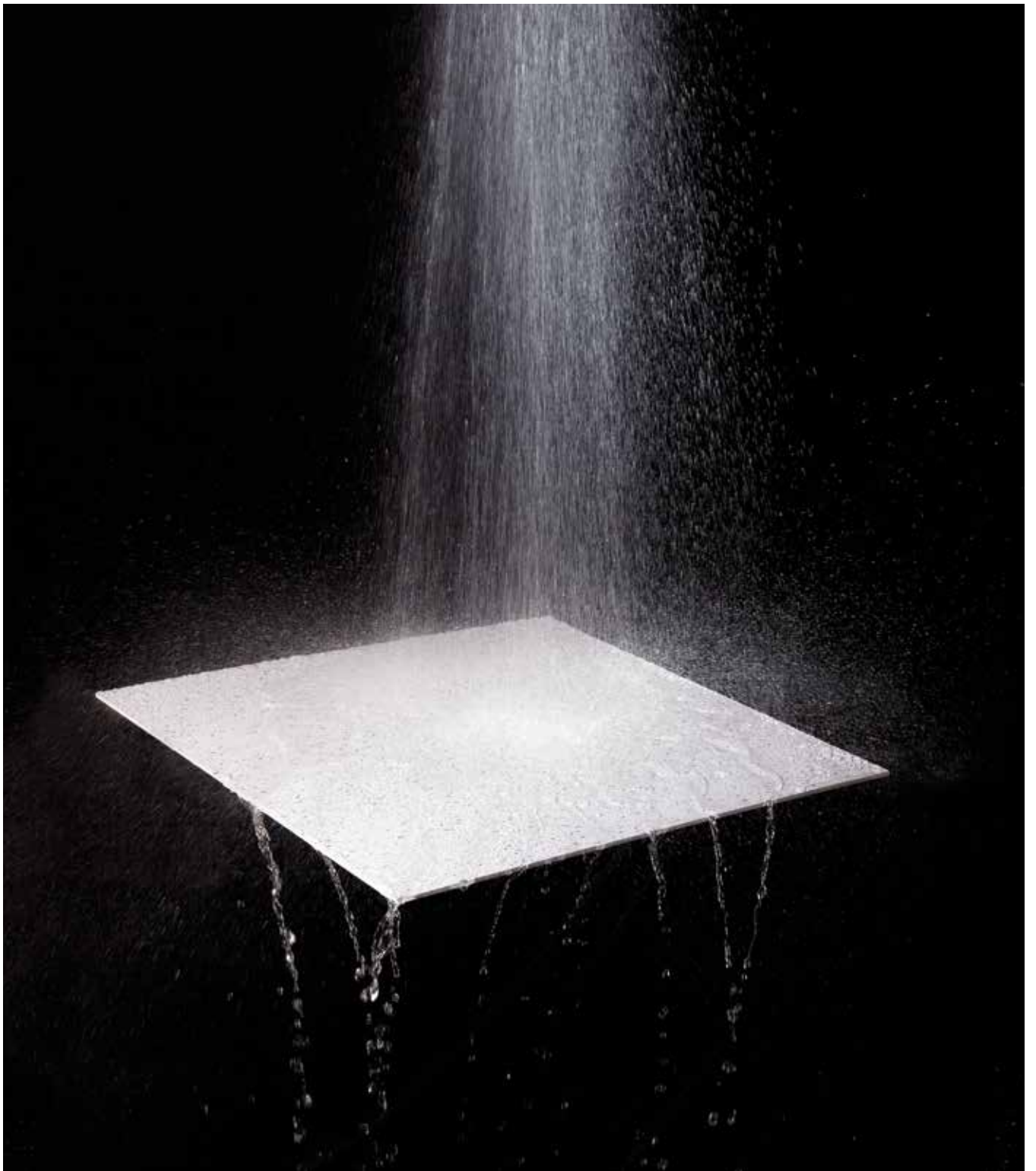
Dust free, non-shedding material

Will not spot, stain, rot, swell or peel due to moisture

Impact-resistant

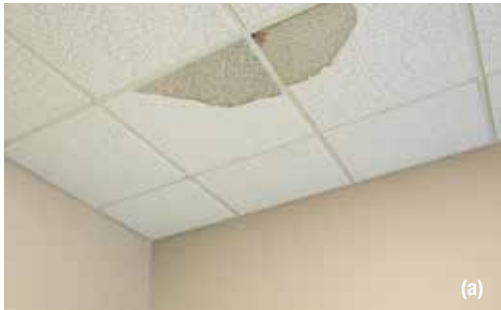
2' x 2' and 2' x 4' size panels

Installs in any existing or new grid system





*The last waterproof ceiling panel
you'll ever need to buy*



(a)

Genesis tiles are perfect for food processing plants, healthcare and education facilities, commercial kitchens, science and pharmaceutical labs, high-humidity climates, clean rooms and marine applications.

Surface Burning Characteristics ASTM E 84 Class "A" fire-rated — Flame and Smoke

Safety Approved for food manufacturing/processing

Durability Resists rust, corrosion, water, mold, mildew, bacteria

Material Virgin-grade PVC vinyl

Compatibility Works with most standard $\frac{15}{16}$ " grid systems

Warranty 25-year limited warranty



(b)

(a) Before (b) After — Printed Pro



Genesis

Product Specifications

	Genesis	Vinyl Clad	Mineral Board
100% Waterproof	●		
Resists Mold & Mildew	●		*
Washable	●		
Class "A" Fire Rating	●	●	*
Easy to Cut	●		●
Fiberglass Free	●	●	*
USDA Compliant	●	●	
Durable	●	●	
Stain Resistant	●	●	
Indoor/Outdoor Applications	●	●	
UV Stable	●		
Acoustical			●

*Only if specified





Multiple styles for multiple applications



1 Smooth Pro

The simple, clean aesthetics of this style has a modern, sophisticated appeal. Its high light reflectance is suitable for indirect lighting applications.

2 Printed Pro

This style's replicated texture finish combines beauty and high durability. Its enhanced light reflectance and diffusion complements exceptional aesthetics.

3 Classic Pro

This European-inspired design offers a unique aesthetic appeal. Its sculpted pattern controls light reflectance.

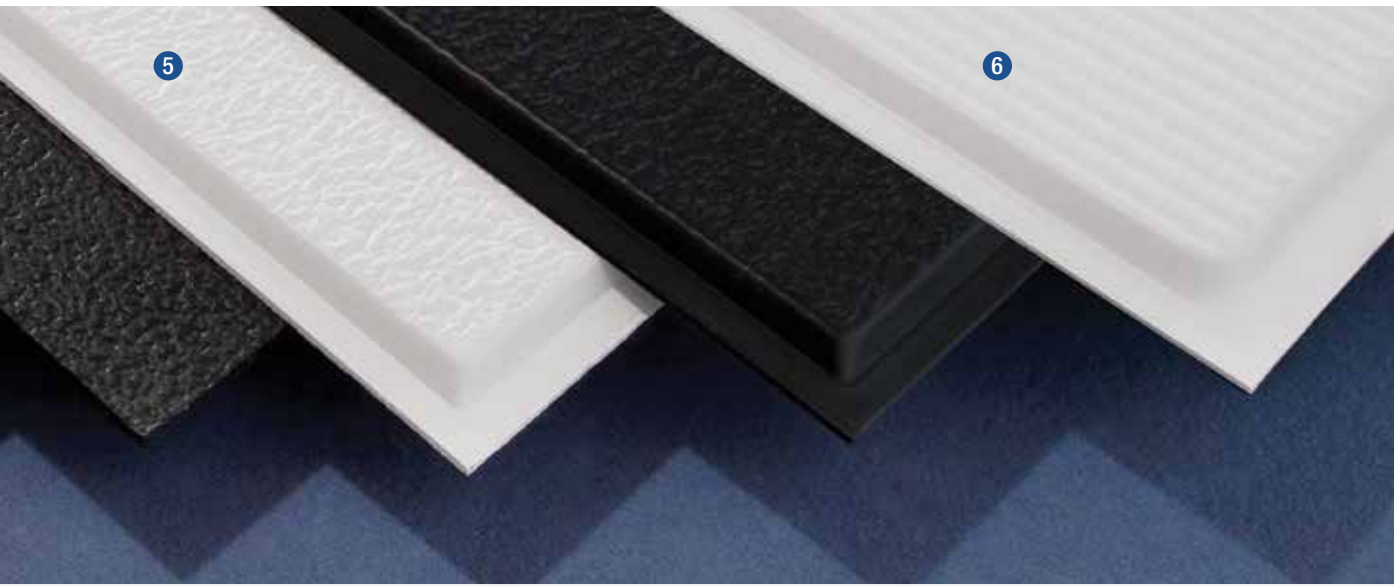
4 Stucco Pro & 5 Stucco Pro Revealed Edge

This style offers an upscale sandstone look with an optional revealed edge. Its lightly textured surface provides attractive finish with excellent light reflectance and durability.

6 Contour Pro

The ribbed texture of this style complements any décor while minimizing light reflectance. The sculpted form and revealed edge creates a three dimensional design which extends beyond the grid to create a visually spacious interior.

(a) Classic Pro (b) Stucco Pro



Genesis

Maintenance-Free Ceiling Solution

Item description	Item #	Dimensions
1 2' x 2' Smooth Pro 2' x 4' Smooth Pro	740-XX (12 per case) 745-XX (10 per case)	23 3/4" x 23 3/4" x 5/32" 23 3/4" x 47 3/4" x 3/16"
2 2' x 2' Printed Pro* 2' x 4' Printed Pro*	741-00 (12 per case) 746-00 (10 per case)	23 3/4" x 23 3/4" x 5/32" 23 3/4" x 47 3/4" x 3/16"
3 2' x 2' Classic Pro* 2' x 4' Classic Pro*	750-00 (12 per case) 755-00 (10 per case)	23 3/4" x 23 3/4" x 5/32" 23 3/4" x 47 3/4" x 3/16"
4 2' x 2' Stucco Pro 2' x 4' Stucco Pro	760-XX (12 per case) 765-XX (10 per case)	23 3/4" x 23 3/4" x 5/32" 23 3/4" x 47 3/4" x 3/16"
5 2' x 2' Stucco Pro Revealed Edge	770-XX (12 per case)	23 3/4" x 23 3/4" x 5/32"
6 2' x 2' Contour Pro Revealed Edge*	780-00 (12 per box)	23 3/4" x 23 3/4" x 5/32"



(a)



(b)

(a) Classic Pro (b) Stucco Pro Revealed Edge

For "XX": White is "00", Black is "07" *Only available in White



*Versatility and elegance —
whatever your style*



1 Icon Relief

This style features a carved geometric design that adds depth and style to any ceiling. These panels are perfect for libraries, conference rooms, hotels and resorts.

2 Icon Coffered

This style is designed to provide the look of a classic coffer ceiling. The geometric design features a high-end appeal that's employed in restaurants, conference rooms and office spaces.

3 Antique

This European-inspired design resembles a popular turn-of-the-century pattern found in metal stamped ceilings from the late 19th and early 20th centuries. The time-honored design is perfect for any historic motif.

4 Drifts

This style features undulating patterns that convey movement and rhythm. This dynamic, modern style is a great fit for retail stores, conference rooms, healthcare facilities and lobbies.



(a) Icon Coffered (b) Antique



Genesis

Designer Series

Item description	Item #	Dimensions
2' x 2' Icon Relief	754-XX (12 per case)	23 3/4" x 23 3/4" x 5/32"
2' x 2' Icon Coffered	753-XX (12 per case)	23 3/4" x 23 3/4" x 5/32"
2' x 2' Antique	752-XX (12 per case)	23 3/4" x 23 3/4" x 5/32"
2' x 2' Drifts	751-XX (12 per case)	23 3/4" x 23 3/4" x 5/32"

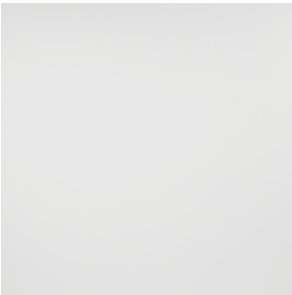
Supplementary Installation Components:

2' x 2' Designer Series Border Tile*	756-00 (12 per case)	23 3/4" x 23 3/4" x 5/32"
Revealed Edge Border Trim Kit	700-99 (White) 701-99 (Black) (25 per case)	23 3/16" x 1 1/8" x 5/8"
Hold-down Clip (Black)	799-00 (50 per box)	--



(a) Revealed Edge Border Trim
(b) Hold-down Clip

Genesis Standard Series



Smooth Pro (White)



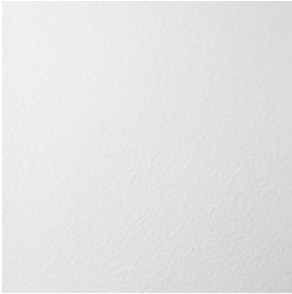
Smooth Pro (Black)



Printed Pro



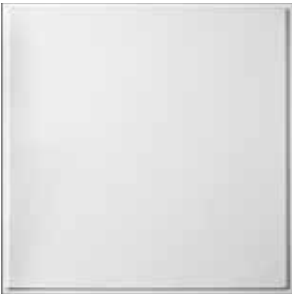
Classic Pro



Stucco Pro (White)



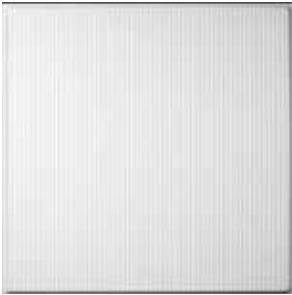
Stucco Pro (Black)



**Stucco Pro
Revealed Edge (White)**



**Stucco Pro
Revealed Edge (Black)**



Contour Revealed Edge

Genesis Designer Series



Icon Relief (White)



Icon Relief (Black)



Icon Coffe (White)



Icon Coffe (Black)



Antique (White)



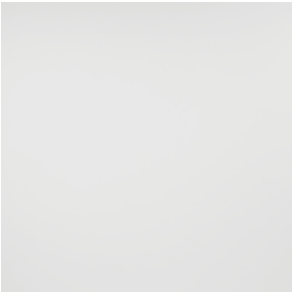
Antique (Black)



Drifts (White)



Drifts (Black)



Designer Series Border Tile



Genesis

Ceiling Solution Accessories

Genesis Ceiling Solution air diffusers, returns, and other accessories are made of rigid, high-performance vinyl that is engineered for strength and durability.

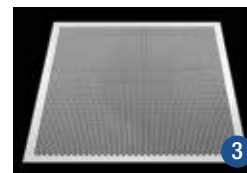
Item description	Item #	Dimensions
1 Round-Pipe Fitted Diffuser 2' x 2' – 8" collar	273-XX	24" x 24"
Round-Pipe Fitted Diffuser 2' x 2' – 10" collar	280-XX	24" x 24"
Round-Pipe Fitted Diffuser 2' x 2' – 12" collar	281-XX	24" x 24"
2 Round Lay-In Diffuser 2' x 2' – 8" collar	201-XX	24" x 24"
Round Lay-In Diffuser 2' x 2' – 10" collar	202-XX	24" x 24"
Round Lay-In Diffuser 2' x 2' – 12" collar	203-XX	24" x 24"
3 Perforated Sheet (White)	267-00	24" x 24"
Universal Collar (Black)	268-07	--



Round-Pipe Fitted Diffuser



Round Lay-In Diffuser



Perforated Sheet

For "XX": White is "00", Black is "07"

Note: All air returns include pleated air filter

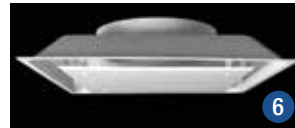
Item description	Item #	Dimensions
4 Air Diffuser 2' x 2' – 6" collar	254-XX	24" x 24"
Air Diffuser 2' x 2' – 8" collar	257-XX	24" x 24"
Air Diffuser 2' x 2' – 10" collar	258-XX	24" x 24"
Air Diffuser 2' x 2' – 12" collar	251-XX	24" x 24"
Air Diffuser 2' x 2' – 14" collar	252-XX	24" x 24"
Air Diffuser 2' x 2' – 16" collar	271-XX	24" x 24"
Air Diffuser – universal collar	259-XX	24" x 24"
5 Air Return 2' x 2' – 6" collar	260-XX	24" x 24"
Air Return 2' x 2' – 8" collar	261-XX	24" x 24"
Air Return 2' x 2' – 10" collar	262-XX	24" x 24"
Air Return 2' x 2' – 12" collar	263-XX	24" x 24"
Air Return 2' x 2' – 14" collar	264-XX	24" x 24"
Air Return 2' x 2' – 16" collar	269-XX	24" x 24"
Air Return 2' x 2' – 18" collar	270-XX	24" x 24"
Air Return – no collar	265-XX	24" x 24"
Air Return – universal collar	266-XX	24" x 24"
6 Air Diffuser/Return 2' x 2' – 6" collar	275-XX	24" x 24"
Air Diffuser/Return 2' x 2' – 8" collar	276-XX	24" x 24"
Air Diffuser/Return 2' x 2' – 10" collar	277-XX	24" x 24"
Air Diffuser/Return 2' x 2' – 12" collar	278-XX	24" x 24"
Air Diffuser/Return 2' x 2' – 14" collar	274-XX	24" x 24"
Air Diffuser/Return 2' x 2' – 16" collar	286-XX	24" x 24"
Air Diffuser/Return 2' x 2' – 18" collar	287-XX	24" x 24"
Air Diffuser/Return – universal collar	284-XX	24" x 24"
7 Air Deflector 2' x 2'	200-XX	24" x 24"
8 Air Diverter	204-XX	24" x 24"
9 Corner Diverter	279-XX	24" x 24"



Air Diffuser



Air Return



Air Diffuser/
Return Combo



Air Deflector



Air Diverter



Corner Diverter



HG-Grid[®]

Vinyl Suspension System

Engineered for high-humidity or corrosive environments

Eliminates rust and white corrosion

Costs less than most corrosion-resistant grids

High-grade PVC vinyl eliminates damage and scratches during installation and transportation

Available in a wide range of colors and finishes

Quick-lock keyhole system offers easy installation

Works with most standard 2' x 2' or 2' x 4' acoustical ceiling tile designed for $1\frac{5}{16}$ " grid





Durable performance for humid or corrosive environments

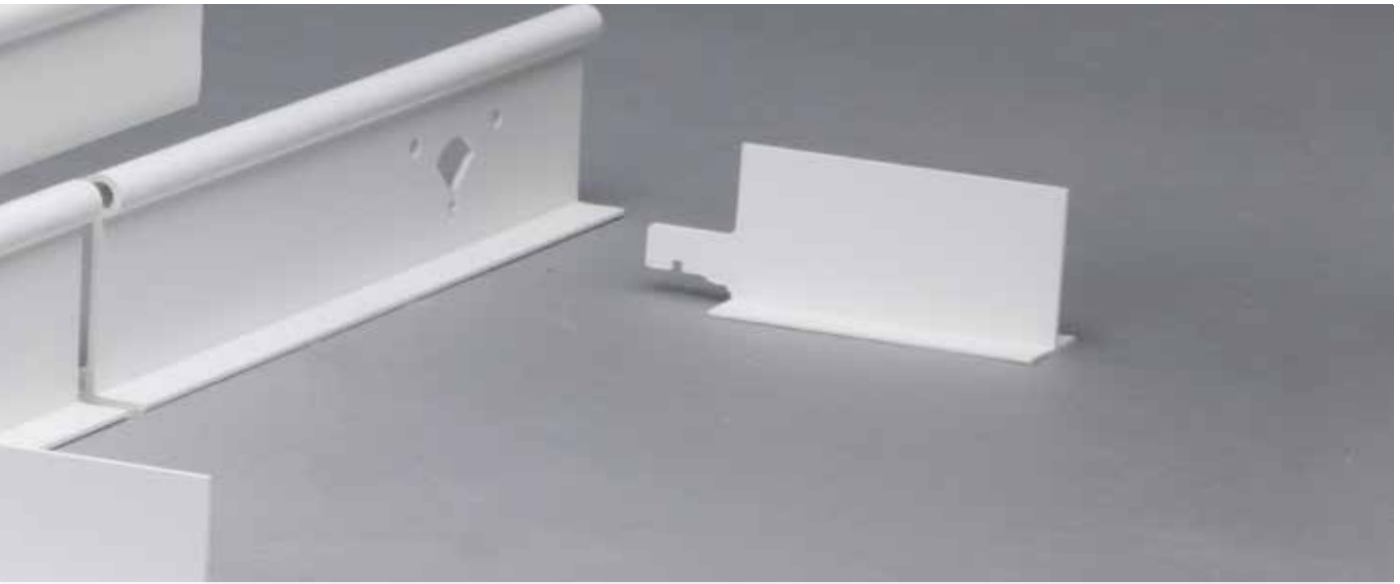


HG-Grid is a high-performance vinyl grid system engineered for humid conditions. HG-Grid installs like conventional metal grid, but at a fraction of the cost of other corrosion-resistant grid systems.

Surface Burning Characteristics	ASTM E 84 Class "A" fire-rated — Flame and Smoke V.O. rating under U.L. 94
Load	Intermediate duty (12 lbs per sq ft) (Load rating per ASTM E C 635 using 2' hanger spacing)
Safety	Approved for food manufacturing/processing
Durability	Rust and corrosion resistant
Material	White and solid colors: virgin-grade vinyl Metallic finishes: virgin-grade vinyl with hot foil laminate
Compatibility	Works with most standard 2' x 2' or 2' x 4' tile designed for $\frac{15}{16}$ " grid
Warranty	25-year limited warranty



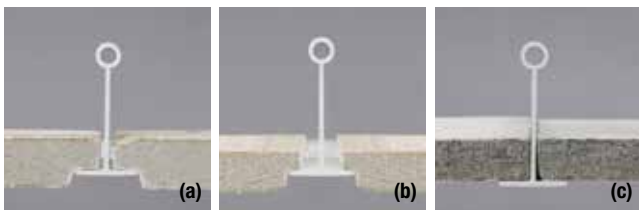
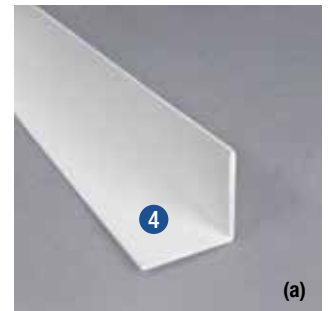
Bermuda Bronze Finish



HG-Grid

Product Specifications

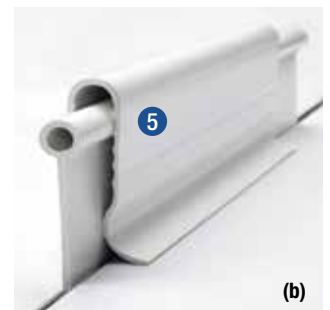
Item description	Item #	Dimensions
1 8' Main intermediate duty 2 Main Connector	312 (connector included)	96" x 1 ⁵ / ₁₆ " x 2"
3 2' Tee	320	23" x 1 ⁵ / ₁₆ " x 1 ¹ / ₂ "
4 8' Angle Molding	350	96" x 1 ⁵ / ₁₆ " x 1 ⁵ / ₁₆ "
5 Hold-down Clip	300	



Tile interface options: (a) beveled tegular (b) square tegular (c) flat



Keyhole connection



(a) Angle molding (b) Hold-down Clip

GridMAX[®]

Ceiling Grid Covers

Will not rust or show scratches

Simple, one-person installation

Available in a wide range of colors and finishes

Works on 2' x 2' or 2' x 4' ceiling grid systems

Pre-notched main covers provide seamless transitions
at cross tee intersections

Components are factory-cut to standard grid dimensions

Eliminates costly facility downtime for demolition and replacement





*An easy, low-cost alternative
to ceiling grid replacement*



GridMAX is the low-cost alternative to replacing or repainting rusted, stained or deteriorated metal grid. These high-grade vinyl covers easily install over existing metal grid, changing the look of a room at a fraction of the cost of other refurbishment solutions.



Moonstone Copper Finish

Surface Burning Characteristics	ASTM E 84 Class "A" fire-rated — Flame and Smoke V.O. rating under U.L. 94
Safety	Approved for food manufacturing/processing
Durability	Rust and corrosion resistant
Material	White and solid colors: virgin-grade vinyl Metallic finishes: virgin-grade vinyl with hot foil laminate
Compatibility	Works with any Imperial or Metric grid systems. May not be compatible with certain shadow-line tile types (consult manufacturer for specifications)
Warranty	25-year limited warranty



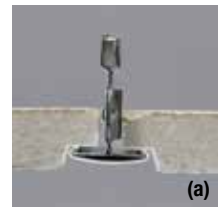
GridMAX

Product Specifications

Grid face	Item #	Description	Dimensions
1 $1\frac{5}{16}$ " & 1"	250	4' Wall Molding Cover	48" x 1" x $\frac{1}{8}$ "
2 $1\frac{5}{16}$ " 1"	230	4' Tee Cover	47" x 1" x $\frac{1}{8}$ "
	232	4' Tee Cover	47" x $1\frac{1}{8}$ " x $\frac{1}{8}$ "
3 $1\frac{5}{16}$ " 1"	210	4' Main Cover	48" x 1" x $\frac{1}{8}$ "
	212	4' Main Cover	48" x $1\frac{1}{8}$ " x $\frac{1}{8}$ "
4 $1\frac{5}{16}$ " 1"	220	2' Tee Cover	23" x 1" x $\frac{1}{8}$ "
	222	2' Tee Cover	23" x $1\frac{1}{8}$ " x $\frac{1}{8}$ "

1" available in White only

Note: Revealed-edge tiles require minimum of $\frac{3}{8}$ " lip for proper fit with GridMAX grid covers
Main covers are notched for ease of installation



Tile interface options: (a) beveled tegular (b) square tegular (c) flat

CeilingMAX[®]

Surface Mount Grid System

High-grade PVC vinyl

No wires to hang or time-consuming leveling

Available in a wide range of colors and finishes

“Snap-In” technology makes installation simple and easy

“Snap-Out” technology provides ability to access the plenum or to replace tiles at any time

Works with most standard 2' x 2' or 2' x 4' acoustical ceiling tile up to 3/4" thick, designed for 15/16" grid

Eliminates rust and scratches without demolition, cost, mess or downtime





Uncompromised performance, unmatched simplicity

(a)

With its surface mount application, CeilingMAX quickly and easily covers old 12" x 12" tile ceilings, floor joists, plaster or drywall. Using "snap-in" technology, CeilingMAX works with most standard 2' x 2' or 2' x 4' tile designed for $1\frac{5}{16}$ " grid.



CeilingMAX

Versatile Ceiling Solutions

(b)

(c)

(a) CeilingMAX over floor joists
(b) CeilingMAX over 12" x 12" tile ceiling (c) CeilingMAX over drywall



Easily renovate old ceilings with durable high-grade vinyl



CeilingMAX is perfect for direct applications over plaster, joists, drywall and paste-up ceilings. Surface-mounted grid system saves up to 6" of ceiling height.

Surface Burning Characteristics

ASTM E 84 Class "A" fire-rated — Flame and Smoke V.O. rating under U.L. 94

Load

Intermediate duty (12 lbs per sq ft)

Safety

Approved for food manufacturing/processing

Durability

Rust and corrosion resistant

Material

White and solid colors: virgin-grade vinyl
Metallic finishes: virgin-grade vinyl with hot foil laminate

Compatibility

Works with most standard 2' x 2' or 2' x 4' tile that are designed for $1\frac{5}{16}$ " grid ($\frac{3}{4}$ " maximum tile depth)

Warranty

25-year limited warranty





CeilingMAX

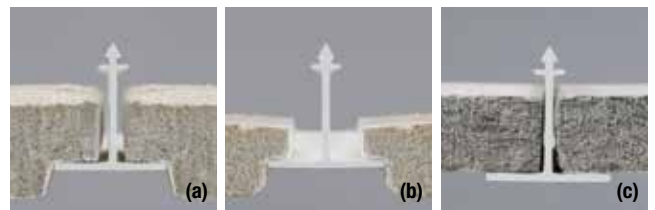
Product Specifications

Item description	Item #	Dimensions
1 Top Hanger	109 - white	96" x 1 1/2" x 15/32"
2 Runner	119 - white / 110 - color	96" x 15/16" x 15/16"
3 Wall Bracket	159 - white / 150 - color	96" x 15/16" x 1 3/16"
4 Cross Tee	129 - white / 120 - color	23" x 15/16" x 15/16"
25" Tee*	121 - white	25" x 15/16" x 15/16"



Cross Tee joint

*The 25" cross tee is used when installation is started at the room's edge with a full border tile. This occurs only when a room's dimensions are exactly divisible by 2 (e.g., 12', 28', etc.)



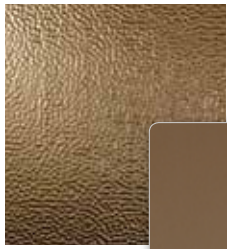
Tile interface options: (a) beveled tegular (b) square tegular (c) flat

Grid Colors & Finishes

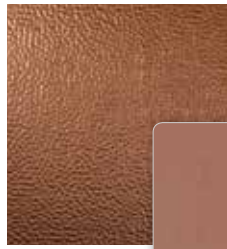
Our grid systems and grid covers are available in White (#00) as well as a variety of colors and patina finishes.



Antique Bronze #31



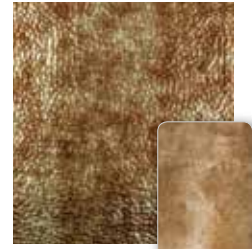
Argent Bronze #28



Argent Copper #10



Argent Silver #09



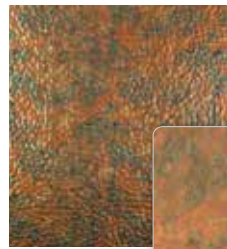
Bermuda Bronze #17



Brushed Aluminum #08



Brushed Nickel #29



Copper Fantasy #11



Cracked Copper #19



Crosshatch Silver #21



Galvanized Steel #30



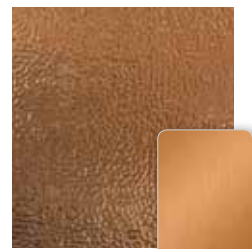
Moonstone Copper #18



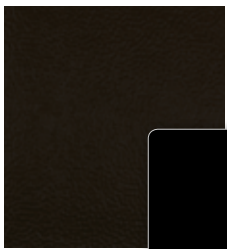
Muted Gold #20



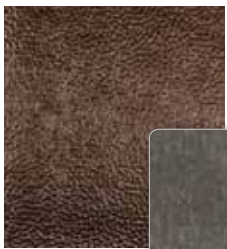
Oil-Rubbed Bronze #26



Polished Copper #25



Satin #07



Smoked Pewter #27



White #00

Visit Fasadeldeas.com to see our complete collection of available finishes.



ACP 

Sound Ideas. Proven Products.

genesisceilingpanels.com | 800.434.3750