

EASI FILE

World's Best Large Document Storage Solution

YOUR DOCUMENTS NOW

↓
Difficult to Find
Unorganized & Messy
Take up Too Much Space



DISCOVER EASI FILE

Your Documents in an Easi File

Retrieve And Replace Documents In Seconds

Unsurpassed Organizational Capability

Up To 69% Less Floor Space Than Flat Files



www.easifile.com

DISCOVER EASI FILE

Simply the world's best large document storage solution. Hand-crafted in the USA, Easi Files are constructed from 100% recycled steel and finished in a non-outgassing powder coating. Easi Files come with a full, limited lifetime warranty and are trusted by the following companies for the filing and storage of their large documents:

- ExxonMobil
- Honeywell
- Boeing
- US Navy
- Federal Aviation Administration
- Hydro Ottawa
- MGM City Center
- Fluor Corporation
- City of New York

Whether you're storing Sets or Single Sheets, Blueprints or Maps, Circuit Boards or Plats, Easi File will exceed your expectations or your money back!



SIZE & CAPACITY SPECIFICATIONS

PART NO.	ACTIVE CAPACITY	STORAGE CAPACITY	MAX DOC SIZE	DRAWING SIZE	HEIGHT	WIDTH	DEPTH	WEIGHT
EF50 & EF50F	1250	2500	24" x 41"	Up To D	47"	27"	18"	210 lb
EF100 & EF100F	1250	2500	34" x 44"	Up To E	50"	37"	18"	280 lb
EF200 & EF200F	1250	2500	36" x 48"	Up To E	54"	39"	18"	320 lb
EF300	1250	2500	44" x 60"	Up To J	50"	63"	18"	475 lb
EF400	1250	2500	44" x 72"	Up To F	50"	75"	18"	540 lb

VERTICAL STORAGE - SIMPLY BETTER

DISCOVER
OPEN



Why Vertical?

For the same reasons we hang our clothes in closets and store our books on shelves – because it's a better way to work with them! Storing your documents vertically makes working with them faster and easier – no more stooping, bending or climbing ladders to retrieve them. No more rifling through heavy stacks. Simply open, sort, and retrieve.

Vertical storage protects your documents from the rips and tears common with flat file storage and provides unsurpassed organizational capability. When your documents are stored vertically, they are literally at your fingertips! Vertical storage is more space-efficient, which means lower facility costs and better-utilized budgets.

DISCOVER
SORT



Discover a Better Way, Discover Easi File!

DISCOVER
SAVES SPACE

Uses up to 69% less floor space than flat files!



29 sq. ft.



9 sq. ft.

DISCOVER
RETRIEVE



CUSTOMIZE YOUR EASI FILE

Custom colors & graphics available



EASI FILE SUPPLIES

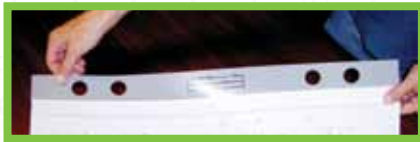


Hangers Self-adhesive polyester strips for hanging prints, maps or other single sheets.



Simply peel off adhesive strip and attach to your document.

PART NO.	LENGTH
EFH22	22"
EFH24	24"
EFH30	30"
EFH34	34"
EFH36	36"



Hangers will go through most copiers.

PART NO.	LENGTH
EFH54	54"
EFH56	56"
EFH58	58"
EFH60	60"
EFH72	72"

Staple Strips Standard Staple Strips are heavy-duty black plastic and include staggered identification tabs for easy labeling. Heavy Duty Staple Strips are reinforced with a steel spine for holding heavier document sets.

Documents are easily stapled to both the Standard and Heavy Duty Staple Strip.



Staple your set of documents onto the **Staple Strip** using any standard heavy-duty stapler.



STANDARD STAPLE STRIP	PART NO.	LENGTH
	EFSTS22	22"
Holds 50 sheets	EFSTS24	24"
	EFSTS30	30"
	EFSTS34	34"
	EFSTS36	36"

HEAVY DUTY STAPLE STRIP	PART NO.	LENGTH
	EFSTS22HD	22"
Holds 200 sheets	EFSTS24HD	24"
	EFSTS30HD	30"
	EFSTS34HD	34"
	EFSTS36HD	36"

Pro-One™ Protective Envelopes

Rugged, reusable, transparent envelopes available in a variety of compartment sizes. Large enough to fully contain your blueprints, engineering and architectural documents, maps, film or artwork.



SIDE ENTRY

PART NO.	No. of Compartments	Max Doc Size/ Compartments
EFB1C	1	24" x 18"
EFB2C	2	24" x 18"
EFB3B	3	24" x 12"
EFB6A	6	12" x 12"

TOP ENTRY

PART NO.	No. of Compartments	Max Doc Size/ Compartments
EFB24x24	1	24" x 24"
EFB24x30	1	24" x 30"
EFB24x38	1	24" x 38"
EFB30x42	1	30" x 42"
EFB34x44	1	34" x 44"
EFB24x38-2	2	24" x 38"
EFB24x38-4	4	24" x 38"
EFB30x42-2	2	30" x 42"
EFB30x42-4	4	30" x 42"
EFB16	16	6" x 6"

EASI FILE ACCESSORIES

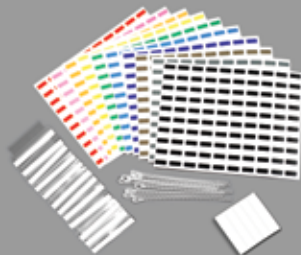
Hanger Applicator

Designed for fast and accurate application of Hanger strips.

PART NO.	LENGTH
EFHA36	Up to 36"
EFHA60	Up to 60"
EFHA72	Up to 72"



Index Kit 1,000 tabs of ten different colors, 12 self-adhesive index tabs, and 10 grouping ties for tying bundles of documents together.



PART NO.
EFIK

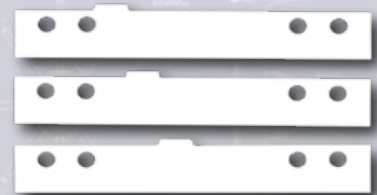
Easi File Cart Adds mobility to your Easi Files. Fits through standard doorways.



PART NO.
EF50 CART
EF100 CART
EF200 CART

Divider Cards

Made of heavy duty plastic with offset ID tabs for separating groups of blueprints and documents.



PART NO.	LENGTH
EFPD22	22"
EFPD32	32"
EFPD53	53"
EFPD68	68"

Out Cards Made of a heavy duty plastic, they extend above the normal hanger strip. Marked with a bright red "OUT" label to identify the position of any removed documents.

PART NO.
EFOC



Security Bar Provides additional security for your valuable documents. Padlock not included.



PART NO.
EFSB50
EFSB100
EFSB200

WALL FILE

For local storage of up to 100 blueprints and documents with sort capability.

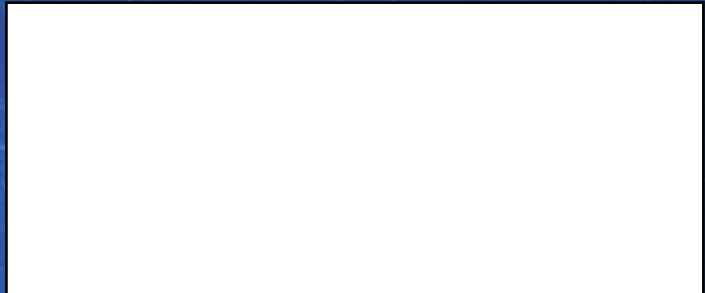
PART NO.	MAX DOC SIZE
EF112	FOR ALL DOCUMENT SIZES





EASI FILE

World's Best Large Document Storage Solution



Contact us for a complimentary in-office demonstration

CASE STUDY::::

THE WORLD BANK, WASHINGTON DC BEFORE CONVERTING TO EASI FILES



The engineering department at the World Bank stores over 14,000 blueprints. 28 five-drawer flat files were used to store most of their drawings. Overfilled flat files made it difficult to open and close drawers. Bent and curled sheets protruded above the drawer height. Additional drawings were thrown into large plastic bins and cardboard boxes. The lack of organization made efficient filing of large drawings virtually impossible. Finally, the flat files took up every inch of available floor space.

THE WORLD BANK TODAY

Fourteen Easi Files have taken the place of the 28 flat files. Documents can now be located and retrieved within seconds without bending or stooping. Drawings remain free of creases, folds, and curls making them much easier to work with. Sheets are protected from tears, fading and environmental hazards. The file room has nearly 40% more available floor space, "I love this system," stated Mr. A. Andersen, the World Bank's lead Construction Manager, about the Easi File System, "the organizational capability of the Easi File is terrific".

