

A black and white photograph of a large industrial warehouse interior. The ceiling is a complex steel truss structure with numerous bright LED lights installed. In the foreground and middle ground, there is various industrial equipment, including a large vertical machine with a circular component, stacks of materials on pallets, and other machinery. The overall scene is brightly lit, showcasing the industrial lighting.

orion

GUIDE

LED LIGHTING
SUMMER 2016



Donna

VAC-CON
POWER TO PEOPLE

ORION WILL CHANGE THE WAY YOU THINK ABOUT A LIGHTING COMPANY.

We've delivered significant savings to some of the best-known, toughest customers on the planet. Now is the time to put our expertise, performance and team to work – giving you a retrofit solution that will make you a hero in your organization.

From the very first handshake to the final fixture installed, our energy is the difference we bring to every retrofit. Ingenuity guides us to new solutions. Dedication helps you at every step. And our products illuminate your world in ways you might not have imagined.

ALLY IN ACCOUNTABILITY

EXPERTISE

Our relationships go beyond shipping you the latest fixture. Your goals become our goals, which means we share responsibility to help you keep your promises and make your project successful.

PRACTICAL INGENUITY

PRODUCT

When you've been on the job site or up on the lift, you build in-the-trenches know-how. That expertise inspires more creative products that maximize real-world performance for your lighting investment.

UNCOMMON DEDICATION

SERVICE

Our customers tell us we have more capable teams that deliver results, not just on paper, but in the day-to-day work of the people we serve. Some say it's our Midwestern roots; we think it's our energy.

LED LIGHTING GUIDE

SUMMER 2016

In this guide, you'll find highlighted fixtures from our LED retrofit lighting portfolio, including their performance, applications, lead times, warranties and other key features.

For our complete line of energy efficient LED retrofit lighting, visit orionlighting.com where you can download data sheets, IES files, install videos and more.



LOWER COST INSTALL

- Modular, plug and play design
- Lower overall labor costs
- Install more fixtures in less time



2-3 WEEK SHIP

- Quick ship, 10 days
- Overnight shipment of additional materials



CLEAN JOB-SITE MANAGEMENT

- Fixtures in trays
- Packaging doubles for recycling
- No need for a dumpster
- Debris-free install



TRUSTED AMERICAN PARTNER

- Clear warranties with excellent coverage
- Quality manufacturing base with domestic and international partners
- 40 years retrofit experience

CERTIFICATIONS



One or more innovations within this product have been granted a patent by the United States Patent and Trademark Office. Visit orionlighting.com/patents for the patents that cover these products.

PATENT | PENDING

One or more innovations within this product are pending by the United States Patent and Trademark Office



Buy American Act Compliant.



DesignLights Consortium™ Premium meets higher efficacy and lumen maintenance requirements.



DesignLights Consortium™ promotes quality, performance and energy efficient commercial sector lighting solutions.



UL has tested representative samples of the product and determined that it meets requirements based primarily on UL's published and nationally recognized Standards for Safety.



An exterior or interior location that is normally or periodically subject to condensation of moisture in, on or adjacent to electrical equipment and includes partially protected locations.



A location in which water or other liquid can drip, splash or flow on or against electrical equipment.



UL has tested and evaluated samples of the retrofit fixture with respect to the safety of the product.

IP65

Protected from total dust ingress. Protected from low pressure water jets from any direction.

IP67

Protected from immersion between 15 centimeters and 1 meter in depth.



Consulting-Specifying Engineer 2016 Product of the Year Finalist



Consulting-Specifying Engineer 2015 Product of the Year

PRODUCT CLASSES

ISON™

Industry-leading efficiency with best in class performance and future-proof modular designs. Lowest total cost of ownership.

APOLLO®

Best performance for the money. Large selection of options and accessories.

HARRIS

Lowest upfront cost with ease of installation. Limited options and accessories.

LEAD TIMES

Quick Ship 1 Business Day

Standard 10 Business

Assigned Lead Time Less than or more than
10 business days



INDUSTRIAL



ISON™ LED High Bay | HBIF2

Application

Well suited to exceed high and/or low bay illumination requirements for industrial, commercial and retail applications.

Feature

Future-proof, modular design allows for field upgrades. Meet new light distribution requirements, such as moving from an open area to aisle lighting, or from high bay to low bay. Simply add a lens for retail applications.

Lead Time

Standard

Color Temperature

3500K, 4000K, 5000K

CRI

≥80

Voltage

120-277v, 347v, 480v

Ambient Operating Range (Max)

-22°F to 131°F (-30°C to 55°C)

Lumen (Range)

12,000 - 25,000

Wattage (Range)

72-143

LPW (Max)

179

Controls

- Battery back up
- End mounted sensor
- Integrated sensor
- Intelite®
- Most third party control systems

Warranty

10 years

Certifications/Listing



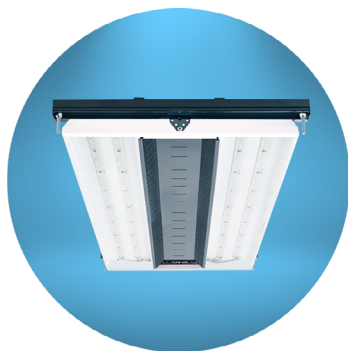
ISON™ LED High Lumen High Bay | HBIF2

Application	Designed to replace high lumen traditional LFL or HID of 400, 750 and 1000 watt in heights above 40'. Well suited for industrial, commercial, and retail applications.
Feature	Highest performing high bay on the market. Future-proof, modular engine allows for ease of field upgradeable performance enhancements. Optional aisle illumination performance package available.
Lead Time	Standard
Color Temperature	4000K, 5000K
CRI	≥80
Voltage	120-277v, 347v, 480v
Ambient Operating Range (Max)	-22°F to 113°F (-30°C to 45°C)
Lumen (Range)	33,000 - 68,000
Wattage (Range)	187 - 403
LPW (Max)	177
Controls	<ul style="list-style-type: none"> • Battery back up • Integrated and end mounted sensor • Intelite® • Most third party control systems
Warranty	10 years

Certifications/Listing

PATENT | PENDING





APOLLO® LED High Bay | HBAC2

Application	Well suited to exceed high and/or low bay illumination requirements for industrial, commercial and retail applications.
Feature	Lightweight design for low installation cost. Unique modular design allows for ease of field maintenance. Open area and aisle illumination package options available that can be modified in the field. Simply add a lens for retail applications.
Lead Time	Standard
Color Temperature	4000K, 5000K
CRI	≥80
Voltage	120-277v, 347v, 480v
Ambient Operating Range (Max)	-22°F to 131°F (-30°C to 55°C)
Lumen (Range)	13,000 - 27,000
Wattage (Range)	97 - 194
LPW (Max)	152
Controls	<ul style="list-style-type: none">• Battery back up• Integrated sensor• End mounted sensor• Intelite®• Most third party control systems
Warranty	5 years

Certifications/Listing





HARRIS LED High Bay | HBHC1

Application Demanding industrial environments that require both a high and/or low bay settings.

Feature Lightweight design for low installation cost. Unique modular design allows for ease of field maintenance. Open area and aisle illumination package options available that can be modified in the field.

Lead Time Standard

Color Temperature 4000K, 5000K

CRI ≥ 80

Voltage 120-277v, 347v, 480v

Ambient Operating Range (Max) -4°F to 122°F (-20°C to 50°C)

Lumen (Range) 11,000 - 22,000

Wattage (Range) 82 - 161

LPW (Max) 148

Controls

- End mounted sensor
- Intelite®
- Most third party end mounted sensors

Warranty 5 years

Certifications/Listing





APOLLO® LED Wide VaporTight | VTOD1

Application Demanding environments that require a watertight seal such as food-processing facilities, wash down applications and cooler/freezer environments.

Feature Available in 2' and 4' lengths. Various light outputs and color temperatures. Multiple mounting methods for most environments. Meets high pressured washdown up to 1500PSI and NEMA 4X Housing.

Lead Time Standard

Color Temperature 5000K

CRI ≥ 80

Voltage 120-277v

Ambient Operating Range (Max) -22°F to 104°F (-30°C to 40°C)

Lumen (Range) 13,000 - 36,000

Wattage (Range) 88 - 235

LPW (Max) 155

Controls

- Battery back up
- Wet location end mounted sensor
- 10 kA surge protection

Warranty 5 years

Certifications/Listing





APOLLO® LED Wide VaporTight Bi-Level | VTOD1

Application	Demanding environments that require a watertight seal such as food-processing facilities, wash down applications and agriculture business facilities.
Feature	Available in 2' and 4' lengths. Bi-level, dual circuit allows for high and low lumen light levels in one fixture. Various light outputs and color temperatures. Multiple mounting methods for most environments.
Lead Time	Standard
Color Temperature	5000K
CRI	≥80
Voltage	120-277v
Ambient Operating Range (Max)	-22°F to 104°F (-30°C to 40°C)
Lumen (Range)	13,000 - 36,000
Wattage (Range)	88 - 235
LPW (Max)	152
Controls	<ul style="list-style-type: none">• Wet location end mounted sensor wired to high lumen circuit• 10 kA surge protection
Warranty	5 years

Certifications/Listing



IP67



APOLLO® LED Narrow VaporTight | VTON1

Application	Demanding environments that require a watertight seal such as food-processing facilities, breweries, agriculture business facilities.
Feature	Available in 4' and 8' lengths. Various light outputs and color temperatures. Multiple mounting methods for most environments. Meets NEMA 4X Housing
Lead Time	Standard
Color Temperature	5000K
CRI	≥80
Voltage	120-277v
Ambient Operating Range (Max)	-22°F to 104°F (-30°C to 40°C)
Lumen (Range)	3,000 - 25,000
Wattage (Range)	23 - 175
LPW (Max)	152
Controls	<ul style="list-style-type: none">• Battery back up• Wet location end mounted sensor• 10 kA surge protection
Warranty	5 years

Certifications/Listing



IP67



APOLLO® LED Narrow VaporTight Bi-Level | VTON1

Application Demanding environments that require a watertight seal such as food-processing facilities, wash down applications and agriculture business facilities.

Feature Available in 4' and 8' lengths. Bi-level, dual circuit allows for high and low lumen light levels in one fixture. Various light outputs and color temperatures. Multiple mounting methods for most environments.

Lead Time Standard

Color Temperature 5000K

CRI ≥ 80

Voltage 120-277v

Ambient Operating Range (Max) -22°F to 104°F (-30°C to 40°C)

Lumen (Range) 3,000 - 25,000

Wattage (Range) 23 - 175

LPW (Max) 152

Controls

- Wet location end mounted sensor wired to high lumen circuit
- 10 kA surge protection

Warranty 5 years

Certifications/Listing



IP67



ISON™ LED High Bay Cold Environment | LEDE

Application Ideal in cooler and freezer applications as low as -40°F.

Feature Superior thermal management leads to longer life and enhanced performance. Various control options offered to gain additional energy savings. Available with general, aisle, or combination lens applications.

Lead Time Standard

Color Temperature 5000K

CRI ≥ 70

Voltage 120-277v, 347v, 480v

Ambient Operating Range (Max) -40°F to 100°F (-40°C to 38°C)

Lumen (Range) 14,000 - 17,000

Wattage (Range) 123 - 173

LPW (Max) 110

Controls

- Battery back up
- End mounted sensor

Warranty 10 years

Certifications/Listing





APOLLO® LED Enclosed Wet Listed High Bay | WTLED

Application Industrial and agriculture applications that require a wet rated fixture used in high and low bay settings.

Feature Sealed and gasketed aluminum body lens frame. Bronze or granite powder coat options. Long Day Lighting option available for agriculture.

Lead Time Standard

Color Temperature 5000K

CRI ≥ 80

Voltage 120-277v, 480v

Ambient Operating Range (Max) -20°F to 113°F (-29°C to 45°C)

Lumen (Range) 12,000 - 27,000

Wattage (Range) 100 - 217

LPW (Max) 125

Controls Integrated wet-listed on/off sensor

Warranty 5 years

Certifications/Listing



IP65





10

Nails
Joist Hangers
Fasteners

9

Mail Boxes/Posts
Signs & Numbers
Weatherstripping
Thresholds

Door Security
Door Locks
Mirrors
Padlocks

OPEN

ACE

OUTDOOR CO

14.99

Service Water

WD-40

WD-40

WD-40

WD-40

WD-40

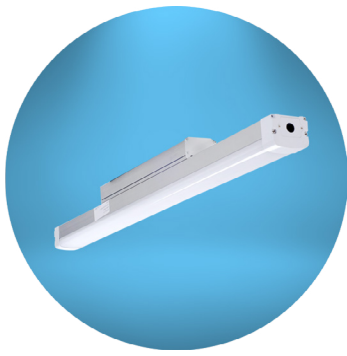
WD-40

WD-40

WD-40

WD-40

RETAIL



APOLLO® LED Suspended Slimline, External Driver | SPTS1

Application High and low bay applications including retail, office and specific task areas in warehouse or industrial settings.

Feature Suspended mounting options available. Full dimming with third party controls.

Lead Time Standard

Color Temperature 4000K, 5000K

CRI ≥80

Voltage 120-277v

Ambient Operating Range (Max) -4°F to 104°F (-20°C to 40°C)

Lumen (Range) 7,000 - 9,000

Wattage (Range) 69 - 88

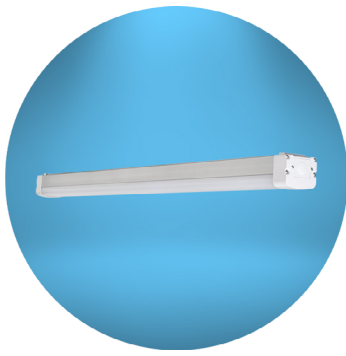
LPW (Max) 108

Controls End mounted on/off sensor

Warranty 5 years

Certifications/Listing





APOLLO® LED Suspended Slimline, Internal Driver | SPTS1

Application	Low bay lighting applications including retail, office and specific task areas in warehouse or industrial settings.
Feature	Suspended and surface mounting options available. Multiple power supply options to accommodate mounting method. Available in full dimming with third party controls.
Lead Time	Standard
Color Temperature	4000K, 5000K
CRI	≥80
Voltage	120-277v
Ambient Operating Range (Max)	-4°F to 131°F (-20°C to 55°C)
Lumen (Range)	2,000 - 6,000
Wattage (Range)	20 - 52
LPW (Max)	109
Controls	End mounted on/off sensor
Warranty	5 years

Certifications/Listing





COMMERCIAL



ISON™ LED LDR® Troffer Retrofit Modular | LDRM

Application Retrofits existing 2'x2' and 2'x4' fluorescent troffers to LED for use in retail, schools, hospitals, government facilities, offices and more.

Feature Patent pending modular light engine allows for color temperature and light output upgrades in the field. Installs in under two minutes to minimize workplace downtime.

Lead Time Standard

Color Temperature 3500K, 4000K, 5000K

CRI ≥80

Voltage 120-277v

Ambient Operating Range (Max) 32°F to 104°F (0°C to 40°C)

Lumen (Range) 2,000 - 8,000

Wattage (Range) 21 - 63

LPW (Max) 125

Controls

- Battery back up
- Lutron® EcoSystem® compatible
- Dial Dimmer
- Enlighted (Internet of Things - IoT)
- PacWave (Controlled by Bluetooth smart device)

Warranty 10 years

Certifications/Listing



PATENT | PENDING





APOLLO® LED LDR® Troffer Retrofit | LDR

Application Retrofits existing 1'x4', 2'x2' and 2'x4' fluorescent troffers to LED for use in retail, schools, hospitals, government facilities, offices and more.

Feature Patented LDR® design offered in both Contour and Flat lens options. Installs in under two minutes to minimize downtime.

Lead Time Standard

Color Temperature 3000K, 3500K, 4000K, 5000K

CRI ≥80

Voltage 120-277v

Ambient Operating Range (Max) 32°F to 113°F (0°C to 45°C)

Lumen (Range) 2,000 - 9,000

Wattage (Range) 20 - 78

LPW (Max) 124

Controls

- Battery back up
- Lutron® EcoSystem® compatible
- Dial Dimmer
- Daintree

Warranty 5 years

Certifications/Listing





HARRIS LED LDR[®] Troffer Retrofit Edge | LDRE

Application Retrofits existing 2'x2' and 2'x4' fluorescent troffers to LED for use in retail, schools, hospitals, government facilities, offices and more.

Feature Patented LDR[®] design, ultra-light highly efficient troffer retrofit solution. Installs in under two minutes to minimize downtime.

Lead Time Tier 3

Color Temperature 3500K, 4000K, 5000K

CRI ≥80

Voltage 120-277v

Ambient Operating Range (Max) 32°F to 104°F (0°C to 40°C)

Lumen (Range) 2,000 - 8,000

Wattage (Range) 22 - 64

LPW (Max) 126

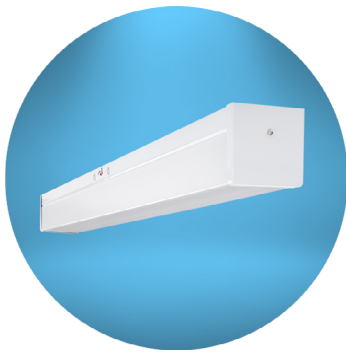
Controls

- Battery back up
- Lutron[®] EcoSystem[®] compatible
- Dial Dimmer
- Enlighted (Internet of Things - IoT)
- PacWave (Controlled by Bluetooth smart device)

Warranty 5 years

Certifications/Listing





APOLLO® LED Stairwell Fixture | SWHU1

Application

For walls or ceilings in stairwells, utility rooms, hallways and bathrooms with ultrasonic sensor.

Feature

Ultrasonic sensors are used when PIR sensors do not have line of sight of movement. In dim mode when occupancy is not heard, fixture can dim to preset level.

Lead Time

Standard

Color Temperature

3000K, 3500K, 4000K, 5000K

CRI

≥80

Voltage

120 - 277v

Ambient Operating Range (Max)

-31°F to 122°F (-35°C to 50°C)

Lumen (Range)

3,600

Wattage (Range)

31

LPW (Max)

127

Controls

Ultrasonic sensor comes standard

Warranty

5 years

Certifications/Listing

CONTROLS

PacWave™

Bluetooth sensor controlled
by smart phone or device

enlighted

Internet of Things (IoT)
wireless Controls

 **LUTRON®**

State-of-the-art dimming
driver programs

InteLite®

Smart sensor with patented
Blaster™ function



LIGHT YEARS AHEAD®

2210 Woodland Drive
Manitowoc, WI 54220

800.660.9340 | 920.482.0520
orionlighting.com

©2016 Orion Energy Systems, Inc. All rights reserved. The Orion logo, ISON™, APOLLO®, HARRIS and InteLite® product names are registered trademarks of Orion Energy Systems. All other trademarks are the property of their respective owners.

P-INT-XS-012 160824